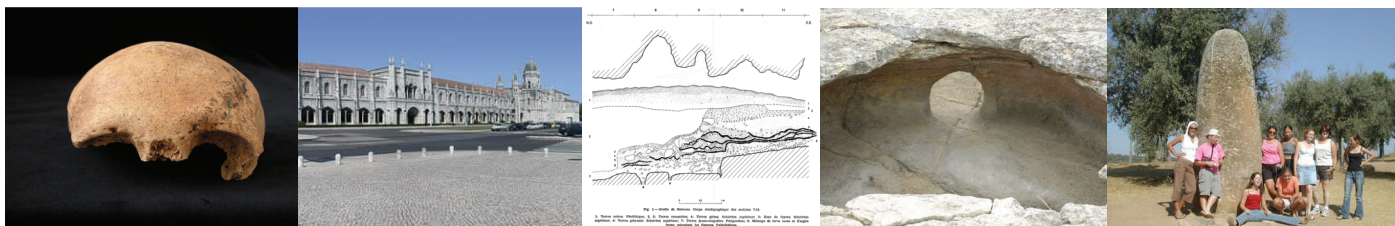


Megalithic Osteology from the Neolithic Tombs of Lisbon, Portugal

Museu Nacional de Arqueologia
June 15th-July 25th, 2009



Program Directors:

Rui Boaventura, University of Louisville

Ana Maria Silva, Universidade de Coimbra

Teresa Ferreira, Universidade de Coimbra

Interns:

1st Session: June 15th-July 3rd

Lydia Friendlander

Jennifer Odien

Alexandra Wilson

Sara Koch

Heather Nichols

Maria Nieves Colon

2nd Session: July 6th-July 24th

Konstantine Triambelas

Noel Shaskan

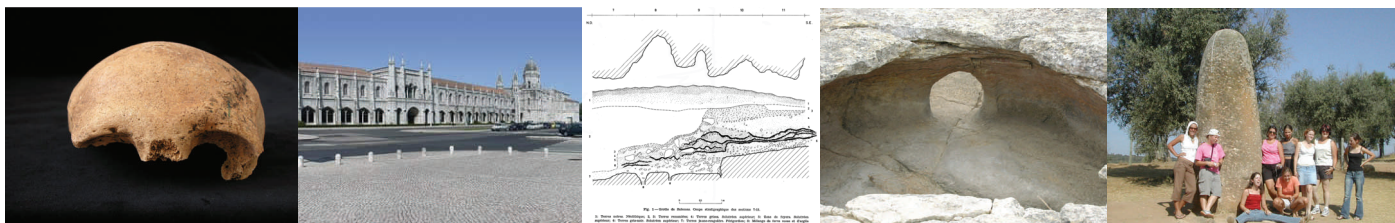
Donald Cantú

Jennifer Odien

Courtney Glazebrook

Sharla Luxton





The Megalithic Osteology Project from the Late Neolithic Tombs of Lisbon will use the osteological remains from several burials from the region of the Estremadura in Portugal. These collections are currently stored at the Museu Nacional de Arqueologia in Belem. This internship will focus namely on the skeletal remains from the Final Neolithic/Chalcolithic rock cut tombs of Carenque. The information obtained from these studies will be used to expand and enhance the knowledge of the Late Neolithic societies.

This is the 5th annual program for this project which has already studied 6 other collections from this region. Past participants have reported back that this program was both challenging and rewarding and that the training that they received during the course of their stay allowed them to continue on in their research on a more independent manner and on an advanced level.

Students will be given more latitude and independent work loads in this internship program and are expected to be already familiar with the basic principals and methodologies of osteology and/or dental anthropology. Students will begin by cleaning, cataloging and inventorying the various collections which are comprised of hundreds of bones and teeth.

Participants will get the chance to work with collections with multiple individuals and will learn how to determine the minimum number of individuals, sex, age and pathologies in mass burial conditions. This internship will also deal with dental anthropology and morphology, the description and classification of teeth as well as the various pathologies that are evident in teeth.

Students are encouraged to participate in the introductory to Portuguese language course during the first week of the program.